



An affiliate of the National Association of Elementary School Principals



President's Message

Heather Moro

WAEMSP President

Principal, Slade Elementary School

Laramie, Wyoming

Further into the Unknown: Leading in Uncertain Times

On a typical Sunday night, I sit at the kitchen table to plan out the upcoming week. I like to take time to contemplate the days ahead and make purposeful choices to increase the likelihood of finding successes. As a principal, I frame my thinking around the intentional use of time, prioritization of tasks, and anticipation of potential roadblocks. What time blocks will be designated to getting into classrooms? Which PLC team meetings are a priority? What issues or concerns can I predict may come up this week and what can I problem-solve ahead of time? These are the questions I ask each week to lead and empower a team of learners.

At least, this is what I used to ask and think about.

This Sunday, as I sit and think about the week, I wonder... who will call in the morning with quarantine orders? Which staff members or students will need extra support and care? How many subs will arrive to teach classrooms of kids (and how will we find coverage for those who don't)? Our current culture of constant change and uncertainty has changed my leadership lens by alternating the questions I ask.

I have shifted from how I intentionally use time to how do I thoughtfully build and strengthen connections with others and support them this week?

Instead of prioritizing tasks I examine how I can help others focus on adjusting expectations for themselves and their students, encourage others to find balance in problem-solving the old and new ways of school, and support setting boundaries between work and home life for all.

And as a replacement for anticipating roadblocks I try to figure out what barriers I can remove for others. What can I get out of the way of teachers? What can we let go of for now? How can we reset priorities for learning?

There are no right ways to lead during the specific set of circumstances we find our schools and lives in today. There is no handbook or checklist that can be utilized to discover the latest and greatest way to lead a school and support learning.

One thing we can do as leaders is ask: who do we want to be as a school and as a community, not only today, but when this is over?

If we keep this question in mind, it begins to feel okay that we may not have all the answers, but we can give our school and the people in it our care and our presence. For now, that is enough.



Wyoming's 2020 National Distinguished Principal



Heather M. Moro
Slade Elementary School
Albany County School District
Laramie, Wyoming

Biography

For the past 12 years, Heather Moro has focused on building a strong learning community at Slade Elementary School. Under her laser-focused leadership and emphasis on positivity, the school has received a state performance rating of “Exceeding Expectations” for five of the past six years and, in 2019, had one of the highest mean percentile growth rates in Wyoming. A proactive leader, Moro is continually furthering her skills. At the district level, she has taken on the multi-tiered system of support coaching roles and facilitation of Instruction Leadership Framework, learning modules for her administrative team. Moro believes in sharing leadership, ensuring all teachers, staff, students, and families are learning. This encourages goal setting, positive thinking, and a focus on future successes. Moro is the president of the Wyoming Association of Elementary and Middle School Principals and regularly leads initiatives that educate the principals of Wyoming. This passion for learning and improvement extends to her staff, whom she prides herself in supporting fervently. Moro works alongside teachers to resolve sometimes challenging issues, implement rigorous instructional programs, and create protocols to ensure students receive appropriate instructional intervention. Her high expectations and belief in students has contributed to much progress and growth at Slade Elementary. Moro has a Principal Endorsement from the University of Wyoming, Laramie, and an M.S. and a B.S. from the University of Oregon, Eugene.





NAESP Report

Janel Scurlock

NAESP State Representative

Assistant Principal, Pinedale Elementary

Pinedale, Wyoming

IMPORTANT EVENTS & DATES

- **2021 National Leaders Conference – February 21-24**, Capitol Hilton
- **NAESP's Centennial 2021 -- Pre-K—8 Principals Conference, July 8-10**, Hyatt Regency Chicago

VIDEO MESSAGES

- Terrific interview by NAESP President Lewis with Comcast Newsmakers! View and share: <https://bit.ly/3kYI5Ic>
- View the latest Edition of NAESP HQ podcast with NAESP Executive Director, Dr. Earl Franks, and President of the Education Commission of the States, Jeremy Anderson: <https://bit.ly/388EZ0P>
- Many of you are familiar with our long-time partner, Lifetouch. Did you know they work with the National Center for Missing and Exploited Children to provide a current, quality image of every child photographed each year? Through the partnership with NCMEC, Lifetouch has assisted with more than 2,500 searches and has contributed to the successful recovery of 60 children from 24 states as a direct result.
 - o Please view and share to support this very important initiative! <https://www.naesp.org/blog/helping-keep-children-safe-smilesafe>

2021 CONFERENCE – NAESP CENTENNIAL

Registration for the NAESP Pre-K—8 Principals Conference™ is now open! Click here for all the details <https://bit.ly/31wHy8G>.

The mission of WAEMSP is to promote and support the improvement of education for all Wyoming children through effective educational leadership.



.....FROM THE BELTWAY

Kris Cundall

Federal Relations Coordinator

Principal, Rock Springs Jr. High

Rock Springs, WY

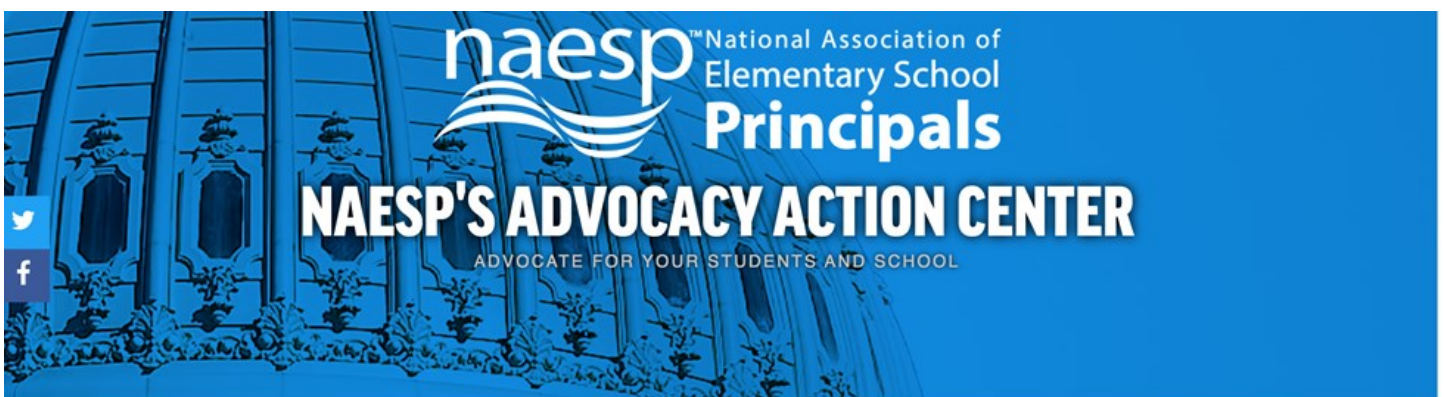
Happy Pre-Holiday Season!

If you would like to know the latest information on all advocacy issues, you can go to the NAESP Advocacy Action Center webpage. NAESP Advocacy Leaders are working in Washington D.C. to encourage Congress to robustly fund education in the newest Coronavirus supplemental bill. Other advocacy issues are Principal Preparation and Protect Students Against E-Cigarettes and Vaping.

Another option is to sign up to receive text messages for the latest information from the Advocacy Action Center. The Center also sends out text messages when there is an emerging need for principals to contact legislators to support a bill to benefit education and/or principals.

As your Federal Relations Coordinator, I will occasionally reach out to you through the WAEMSP listserv for feedback or to encourage you to let our legislative members know your opinion on upcoming issues. You can always let me know questions or concerns you would like forwarded to the Washington D.C. congressional delegation as well.

I would also like to thank you for all you do for Wyoming's students during this COVID pandemic. It is not an easy time to serve as a building leader, and we have more on our plates than ever before. During the upcoming holiday season, take some time for your family, your friends and yourself. It is important to fill your own cup in order to keep giving during second semester.





Executive Director Report

Kenny Jones

WAEMSP Executive Director

Sheridan, Wyoming

Membership: We currently have 171 members who have renewed or joined WAEMSP and NAESP for the 2020 - 21 school year as of October 31. *As a member driven organization it is important to maintain our membership so that we can continue to provide benefits to principals within Wyoming. I would strongly encourage you to renew your membership, if you haven't already done so, and if you could recruit a new principal or assistant principal that would be great.* This year the executive board is providing \$25 to any member who recruits a new principal or assistant principal. As a show of appreciation for those who renew quickly the executive board is continuing to hold drawings for \$50 on the first of September, October, November, December, and January for those who have renewed their membership. Our September winner was **Nancy Torstenbo** in Rock Springs, October winner was **Amanda Hall** in Cheyenne and the November winner was **Tanya Wall** in Laramie! Congratulations to those ladies and thanks to all of you who have renewed this year.

National Conference will be in Chicago on July 8 - 10, 2021: Early bird registration for NAESP's National Conference is running now through November 30th, you can save \$100 on your registration if you take advantage of the early bird registration. I hope some of you will be able to attend next summer as I have found the national conferences to be outstanding professional development opportunities.

Wyoming Assistant Principal of the Year: If you are a principal who has an assistant and you feel they are outstanding please nominate them for WAEMSP's Assistant Principal of the year as **we are currently receiving nominations for our 2021 Assistant Principal of the Year.** You can send me their names and I will get them the application.

WAEMSP Annual State Conference: The conference planning committee is continuing to seek input regarding the "type" of conference members would like to see occur next spring. If you haven't completed the survey which was sent out last week please take the time to provide us your input.

National Distinguished Principal for 2020: Congratulations again to Heather Moro on being selected as our NAESP/WAEMSP National Distinguished Principal for 2020. Due to Covid-19 restrictions NAESP was unable to host their national recognition program in Washington D.C. this year. However they have combined this program with the National Conference being held in Chicago next July. Please keep an eye out as we will be beginning our 2021 NDP selection process in the very near future.

Summer Reading 2020: This year we had **1,050** students in **48** schools participate in our summer reading program. Those students read **1,818,257** minutes which breaks down to be an average of about **28.85** hours per student, each of the participants should be commended on their efforts. I would like to personally thank all of the principals who had their children participate in the WAEMSP summer reading program!! The next couple of pages has a few photos of students enjoying their summer reading celebrations along with the participating schools.

Summer Reading Program 2020

0 - 99		
School Name	City	Principal
Douglas Rural Schools	Douglas	Haylei Butler
4J Elementary	Gillette	Lindy Watt
Upton Elementary	Upton	Gary Glodt
LaBarge Elementary	Big Pine	Amy Bell
100 - 199		
School Name	City	Principal
Lusk Elementary	Lusk	Lu Kasper
Burlington Elementary	Burlington	Matt Davidson
Parkside Elementary	Powell	Jason Hillman
Laura Irwin Elementary	Basin	Jeff Fuller
Saratoga Elementary	Saratoga	Darrin Jennings
Ashgrove Elementary	Riverton	Necole Hernandez
Willow Creek Elementary	Riverton	Jeremy Hill
Buffalo Ridge Elementary	Cheyenne	Liann Brenneman
Washington Elementary	Green River	Anne Marie Covey
Big Piney Elementary	Big Piney	Amy Bell
200 - 299		
School Name	City	Principal
Livingston Elementary	Cody	Mike Wood
Southside Elementary	Powell	Scott Schiller
Shoshoni Elementary	Shoshoni	Andrea Gilbertson
Rendezvous Elementary	Karly Ward	Karly Ward
Harrison Elementary	Green River	Steve Lake
Etna Elementary	Etna	Keith Klein
Cloud Peak Elementary	Buffalo	Craig Anderson
Sunset Elementary	Cody	Jay McCarten
Dildine Elementary	Cheyenne	Mike Wortman
Sage Elementary	Rock Springs	Nancy Torstenbo
Meadowlark Elementary	Buffalo	Laurie Graves
Rossmann Elementary	Cheyenne	Vicki Begin
Bar Nunn Elementary	Bar Nunn	Lynn Leslie
Linford Elementary	Laramie	Dave Hardesty
Westridge Elementary	Rock Springs	Karl Wells



300 - 399		
School Name	City	Principal
Westside Elementary	Powell	Angela Woyak
Jessup Elementary	Cheyenne	Barbara Leiseth
Lovell Elementary	Lovell	Deanna Martineau
Pioneer Park Elementary	Cheyenne	April Gates
Prairie Wind Elementary	Cheyenne	Teresa Ross
Paintbrush Elementary	Gillette	Jenni Gilson
Freedom Elementary	Cheyenne	Chad Delbridge
Saddle Ridge Elementary	Cheyenne	Don Brinkman
Pronghorn Elementary	Gillette	Clay Cates
400 +		
School Name	City	Principal
Uinta Meadows Elementary	Evanston	Jerrod Dastrup
Gannett Peak Elementary	Lander	Leslie Voxland
Afton Elementary	Afton	Danny Robinson
Moorcroft K - 8 School	Moorcroft	Teresa Brown
Rawlins Elementary	Rawlins	Benita Allard
Lakeview Elementary	Gillette	Dale Petersen
Middle Schools		
School Name	City	Principal
Davis Middle School	Evanston	Chris Brown
Big Horn Middle School	Big Horn	Richard Welch
Upton Middle School	Upton	Gary Glodt
Lusk Middle School	Lusk	Lu Kasper



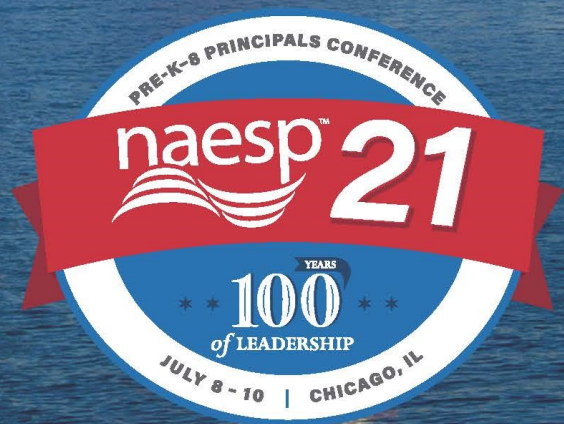
“The more you **read**
the more **things** you know.
The more that you **learn**
the more **places** you’ll go.”
-Dr. Seuss



Leading for 100 Years

The NAESP Annual Conference is the one national event that provides the strongest unified voice for pre-K-8 educators across the U.S. and around the world.

Join us in **Chicago, July 8-10, 2021**, to help celebrate **NAESP's 100th anniversary** of offering professional learning experiences designed to inspire bold thinking and innovative leadership.



National Association of Elementary School Principals
Serving all elementary and middle-level principals



Slade Elementary named as Blue Ribbon School by U.S. Department of Education

- By JEFF VICTOR news@laramieboomerang.com
- Oct 18, 2020

An Albany County school is one of two in the state to be honored by the U.S. Department of Education as a 2020 Blue Ribbon School. Slade Elementary School in Laramie was declared an “Exemplary High Performing” school for its WY-TOPP scores, student growth and commitment to equity. Poder Academy in Cheyenne was also named a Blue Ribbon School this year.

“For all of us here, it helps us feel acknowledged and that we’re moving in the right direction,” Slade Principal Heather Moro said. “This year, in particular, it was a nice bright spot of celebration when we got the call.”

The award considers gaps between socioeconomic, gender or other subgroups within the school. Slade was noted for its commitment to equity.

“About maybe seven or eight years ago, we made a commitment as a staff that we believed in all children — and ‘all’ really meant all children,” Moro said. “So how are we going to work together to make sure all kids have access to grade-level instruction? And that they have opportunities to get grade-level instruction in multiple ways?”

The Blue Ribbon designation also takes into account overall test scores, and student growth over the years.

“As instructors, we’ve worked really hard on being clear about what we want kids to learn and being able to identify the steps or skills they would need to learn that,” Moro said. “We are able to communicate those learning goals, or those steps, to kids so they can identify where they are in that process.”

But a school is more than the sum of its teachers and students. Moro places an emphasis on communicating with families, making sure they feel a part of the team.

“We’ve worked really hard to build a culture of inclusiveness,” she said. “We have a great foundation of families who have been at our school for a long time who have had multiple kids go through our system.”

Slade also welcomes new families — for example, those with children in the dual language immersion (DLI) program.

Shawna McBride’s daughter, Chelsea Crait, is a first grader at Slade Elementary, having transferred just this year when her grade’s DLI classes were consolidated to Slade from multiple elementary schools.

“We had heard great things about Slade, so we were excited to move there,” McBride said. “And we were really grateful that they made the space for all of these students. We really are excited to be there.”

This is the first time Slade Elementary has won the Blue Ribbon award. The last local school to receive Blue Ribbon status was Snowy Range Academy in 2018.

In a strange year unlike any other, McBride said she has found those at Slade to be helpful and communicative, always willing to “go the extra mile.”

“Overall, we were a little worried about what it would be like this year, obviously,” McBride said. “But it’s been going really well.”

Each year, up to 420 schools nationwide are nominated by a state or territory’s top education official or department of education.

Superintendent of Public Education Jillian Balow said the nomination is based on a wide range of criteria.

“The most interesting, exciting thing about a blue ribbon school is that it’s not just a point in time — it’s sustained over multiple years,” Balow said. “It’s not just that they did something good one time or that someone is really good inside of the school. It’s a team effort that is sustained over time and it really does take — from the leadership level to the classroom level — a lot of really hard work by leaders, parents, teachers and students.”

Balow praised Principal Moro, highlighting the school’s culture where more seasoned teachers mentoring new teachers, as well as the school’s commitment to intervention whenever students fall behind.

“It’s not guaranteed that a state would have Blue Ribbon Award winners,” Balow said. “It’s strictly based on their sustained high performance or sustained growth. To have a Blue Ribbon School is really a feather in our cap as a state. But also a really clear message to the community of Laramie and the state of Wyoming that quality education is alive and well.”

In 2020, the U.S. Department of Education named 317 public and 50 non-public schools Blue Ribbon Schools, planning to hold a virtual ceremony to honor the celebrated school on Nov. 12-13.

I would like to thank Jeff Victor and the Laramie Boomerang for permission to reprint this article.



Governor's Proclamation



NATIONAL PRINCIPALS' MONTH

WHEREAS, the role of a school principal is broad based ranging from educational leader to community builder and from budget analyst to facilities manager; and

WHEREAS, school principals work collaboratively with teachers and parents to develop and implement clear missions, high curriculum standards and effective performance goals; and

WHEREAS, school principals create school environments that facilitate great learning, effective teaching and continuous improvement; and

WHEREAS, school principals are a mobilizing force in effective schools; and

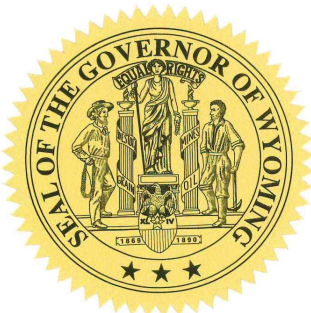
WHEREAS, National Principals' Month recognizes the contributions of elementary, middle and high school principals and their role in ensuring that every child has access to a high-quality education.

NOW, THEREFORE, I, MARK GORDON, Governor of the State of Wyoming, do hereby proclaim October 2020 as

NATIONAL PRINCIPALS' MONTH

in Wyoming.

IN WITNESS WHEREOF, I have hereunto set my hand and caused the Executive Seal of the Governor of Wyoming to be affixed this 6th day of October, 2020.



A handwritten signature in blue ink that reads "Mark Gordon".

The Honorable Mark Gordon
33rd Governor of the Great State of Wyoming



Web seminars provide real-time opportunities to interrelate with content experts, educational leaders, and practicing principals around current issues. NAESP provides this setting to bring together principals from locations around the country to participate in these online learning programs. No special equipment other than Internet access is needed to participate in any of our webinars. Most webinars are free.

Special Coronavirus/COVID-19 Webinars

- [Principal\(ing\) in Place Webinar Series](#)
- [Leading Virtual Learning Communities Webinar Series](#)

Archived webinars are available only to members using your NAESP log in.

LEADING FOR LITERACY: HIGHLIGHTING KEY CONSIDERATIONS FOR LITERACY SCREENING AND ASSESSMENT

Date: November 19, 2020

Time: 2:00 – 3:00 p.m. ET

Quality assessment information and data provide critical information about student performance in reading and informs instructional implementation that best meets student needs. Data are used to inform instruction in important, meaningful, and maintainable ways. In the second installment of the Lead for Literacy NAESP webinar series, join David Fainstein, MA, and Lauren Artzi Ph.D., from the Lead for Literacy Center as they will discuss types of data that inform reading instruction and review the quality indicators of useful data and assessments. The key role of diagnostic, summative, and formative assessment will be presented, and the process for examining data from those assessments will be discussed. They will also share the purpose and process of screening for reading in students in both traditional and virtual settings and highlight important components of data-based decision making using school teaming structures.

Participants will:

- Recognize features of research-informed practices on the types and approaches for assessing literacy skills, with a focus on screening.
- Describe barriers and solutions that impact screening implementation and databased decision-making.
- Identify the strengths and stretches of assessment practices within your school/district that lead to data-based decision-making.

Presenter: [David Fainstein, M.A.](#), is a doctoral candidate at the University of Oregon and graduate employee at the Center on Teaching and Learning.

Facilitator: [Dr. Lauren Artzi](#), is a Technical Assistance Coach for the Lead for Literacy Center and Senior Researcher at the American Institutes for Research.

[REGISTER NOW!](#)

THANKS
FOR
GOING
ABOVE
AND
BEYOND!

#THANKAPRINCIPAL



#THANKAPRINCIPAL

THANK YOU FOR
ALL YOU DO!



Our Principal Mission is YOU..... Join Us Today!

Please type or print _____ ☐ New member ☐ Renewing member

Name _____ Date of Birth _____

Position _____ School _____ Grade Config. _____

School Address _____

City _____ State _____ Zip _____

School Phone _____ School Fax _____

Home Address _____

Home Phone _____ Email Address _____

Preferred Address: ☐ Home ☐ School Referred by: _____

Type of Membership:

<input type="checkbox"/> WAEMSP/NAESP Active	\$450
<input type="checkbox"/> WAEMSP/NAESP Assistant Principal	\$370
<input type="checkbox"/> WAEMSP/NAESP Institutional/Active	\$475
<input type="checkbox"/> WAEMSP/NAESP Emeritus	\$85
<input type="checkbox"/> WAEMSP/NAESP Aspiring	\$95
<input type="checkbox"/> WAEMSP/NAESP Associate	165

Method of Payment, check one:

Make checks payable to WAEMSP.

☐ Check enclosed ☐ PO

Pay online with your credit card, www.waemsp.org.

Mail form along with payment to: **Kenny Jones, 2073 Pheasant Draw Road, Sheridan, WY 82801, waemsp.exec@gmail.com**

Your 2020 - 2021 WAEMSP Board of Directors

PRESIDENT

Heather Moro, Slade Elementary, Laramie 721-4410

PRESIDENT-ELECT:

Dave Hardesty, Linford Elementary, Laramie 721-4439

VICE-PRESIDENT:

Clay Cates, Pronghorn Elementary, Gillette 682-1676

STATE REPRESENTATIVE:

Janel Scurlock, Pinedale Elementary, Pinedale 367-2828

MIDDLE LEVEL REPRESENTATIVE:

Lu Kasper, Lusk Elem & MS, Lusk 334-2224

SECRETARY:

Anne Marie Covey, Washington Elem, Green River 872-2000

TREASURER:

Mike Wood, Livingston Elementary, Cody 587-4271

STATE LEGISLATION:

Liann Brenneman, Buffalo Ridge Elem, Cheyenne 771-2595

FEDERAL RELATIONS:

Chris Cundall, Rock Springs Jr. High, Rock Springs 352-3474

NORTHWEST REGION PRESIDENTS:

Ryan Clark, Worland Middle School, Worland 347-3233

Barry Scott, Fort Washakie Elementary, Fort Washakie 332-2380

NORTHEAST REGION PRESIDENTS:

Brian Hartwig, Sundance Elementary, Sundance 283-1227

Nate Cassidy, Buffalo Ridge Elementary, Gillette 688-3058

CENTRAL REGION PRESIDENTS:

Tanya Seeds, Douglas Primary, Douglas 358-3502

Wes Gamble, Douglas Intermediate, Douglas 358-5250

SOUTHWEST/WEST REGION PRESIDENT:

Amy Bell, Big Piney/LaBarge Elem., Big Piney 276-3313

Christopher Jensen, Urie Elementary, Lyman 786-4100

SOUTHEAST REGION PRESIDENT:

Vicki Begin, Rossman Elementary, Cheyenne 771-2544

Nyana Sims, Lincoln Elementary, Torrington 532-4003

EXECUTIVE DIRECTOR/EDITOR:

Kenny Jones, Sheridan 202-0977



Enjoy the GOOD life. Make the most of your benefits.

Association Member Benefits Advisors (AMBA) is proud to partner with the Wyoming Association of Elementary and Middle School Principals. AMBA is a nationwide full-service agency focused on plan design, negotiations, and implementation of benefit programs for associations.

We currently make benefits available to over 40 associations across the United States. We assist in making benefits available such as first diagnosis cancer insurance, long-term care insurance, and many merchant discounts that are not available to the general public.

Make sure you're making the most of your WAEMSP membership.
See what benefits are available to you!

To learn more about available benefits, call 800-258-7041

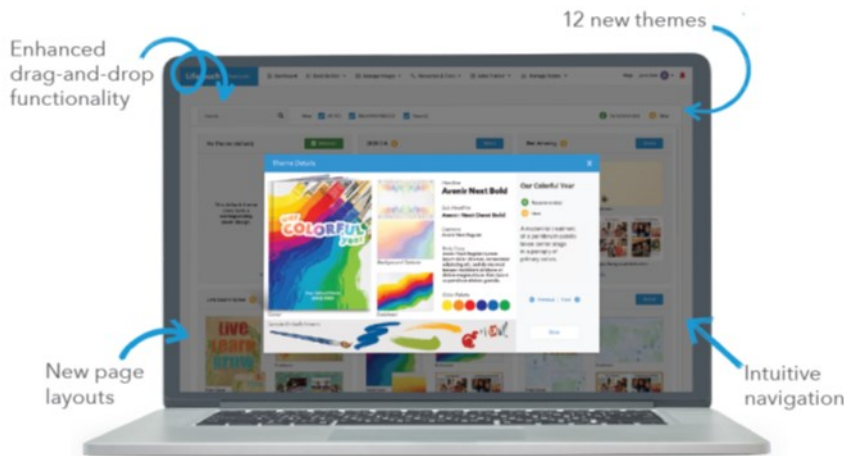


in partnership with



From **simple** to **sophisticated**.

Introducing our new Lifetouch Yearbook Creation Tool.

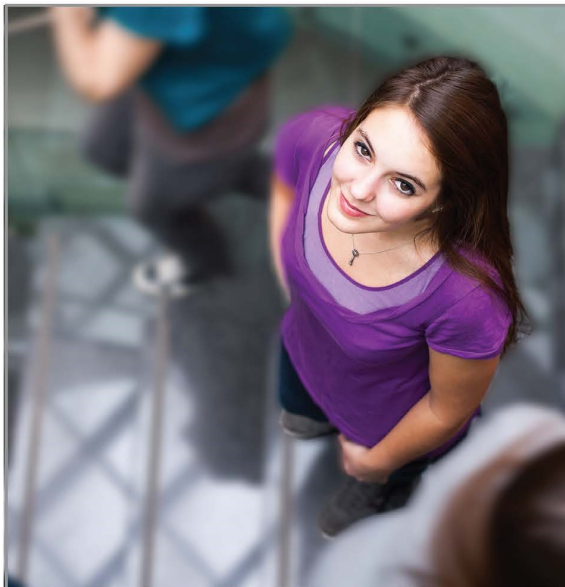


We make it **fun** and **easy** to tell your school's story:

- Picture Day images automatically upload for you to flow onto pages.
- Build pages effortlessly: choose a layout, add images and captions and you're done.
- Inspirational resources and tools for every stage and every page.

schools.lifetouch.com/yearbooks

Lifetouch.



Attract talented teachers with no-cost school benefits

Attract and retain top teaching talent by offering more. In addition to your benefits package, provide quality financial education workshops, explain proven ways to secure classroom funding and offer extras like a teacher recognition program – all provided by Horace Mann.

For information about Horace Mann and how we can help your schools and your employees, visit schools.horacemann.com or contact us at 866-999-1945.

Auto | Home | Life | Annuity

 **Horace Mann**
Founded by Educators for Educators

A Comprehensive Social and Emotional Learning Program



In today's complex world, a well-defined SEL program is more important than ever. Edgenuity® is proud to partner with Purpose Prep to offer a content-rich SEL curriculum to address a broad range of prevention and intervention priorities for students in grades 6–12.

edgenuity.com
877.7CLICKS

 **Edgenuity** +  **PURPOSEPREP**

inspiring
healthy kids
HEAD TO TOE

**You can expect a timely and
innovative solution with high-quality
products and excellent service at a fair price**



Park, Playground & Athletic Equipment

Dakota Playground®

*"My focus is to deliver you
a successful outcome"*

Ken Follman
ken@dakotaplayground.com
844.599.0757 O
701.541.0817 C



taco john's™

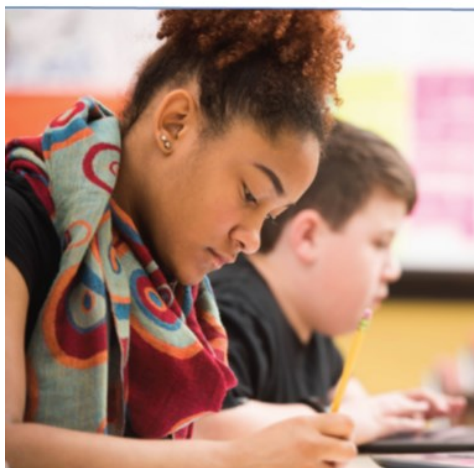
SINCE 1969

Equitable Literacy Education
for grades pre-K–12



Literacy instruction for students
of all abilities in grades pre-K–5

- **Differentiates** instruction in the six areas of reading to accelerate learning
- **Provides** actionable data with Lexia's patented **Assessment Without Testing®**
- **Research-proven** to improve the reading performance of English Learners



Literacy instruction for struggling and
non-proficient readers in grades 6 and above

- **Personalizes** instruction in Word Study, Grammar, and Comprehension
- **Empowers** educators with real-time data and offline resources
- **Motivates** and engages adolescent students in a game-like environment



National Association of
Elementary School
Principals