



An affiliate of the National Association of Elementary School Principals



Gillette, WY – March 10, 2021 – **Mr. Bertine Bahige**, principal of Rawhide Elementary School in Gillette was selected as Wyoming's 2021 National Distinguished Principal. The 2021 celebration marks the 38<sup>th</sup> year that the National Association of Elementary School Principals (NAESP) has presented this prestigious award.

Mr. Bahige was nominated and selected by fellow principals through a statewide search process conducted by the Wyoming Association of Elementary and Middle School Principals, said WAEMSP Executive Director Kenny Jones.

Bertine is a graduate of the University of Wyoming and South Dakota State University. He served as a high school math teacher in Gillette from 2009 - 2015. He became the principal at Rawhide Elementary in 2016.

"At the helm of every successful school is a successful principal," said L. Earl Franks, NAESP's Executive Director. "Our National Distinguished Principals program provides us with an opportunity to recognize the outstanding leadership of these principals and their commitment to creating successful learning communities. Because of them, students thrive academically, teachers grow professionally, and communities are strengthened."

In October 2021, Bertine will travel to Washington, D.C. for two days of activities planned to honor and bring well-deserved recognition to the elementary and middle-level educators chosen by the states, the District of Columbia, plus private and overseas schools.

Criteria for selection of the principals require that the honorees are active principals of schools where programs are designed to meet the academic and social needs of all students and where there are firmly established community ties with parents and local business organizations.

Mr. Kirby Eisenhower stated "Mr. Bahige's story is on that needs to be told. From making his way to Wyoming as a refugee, to the success he has demonstrated as an educational leader; Mr. Bahige is the epitome of perseverance. His life journey spotlights the value of education and the rewards that can be obtained through hard work and determination. Mr. Bahige's story provides hope and encouragement to those who may currently find themselves in a precarious situation."

"Bertine Bahige is a transformational leader who began by believing in the people around him. It is with this belief that he built a community of learners with a common vision of what could be at Rawhide Elementary School. Over the last four and half years, Mr. Bahige has been working with the school community to turn the vision of growth, acceptance, and success into a reality. He truly exemplifies the excellence deserving of the National Distinguished Principal Award for Wyoming," says Heather Moro, 2020 NDP.

Since 1956, the Wyoming Association of Elementary and Middle School Principals has served as Wyoming's professional educational association and now represents 180 elementary and middle school principals and aspiring principals throughout the state. WAEMSP maintains close ties with the metropolitan Washington, D.C. based National Association of Elementary School Principals and its 17,000 members worldwide. (2020 NDP, Heather Moro, presents Bertine with his 2021 NDP plaque at Rawhide Elementary.)



## WAEMSP ELECTIONS

### SPRING 2021

During the week of March 15<sup>th</sup> WAEMSP will be holding its annual election of officers. We have three elected positions which are open this spring. During the open nomination window in February we received nominations for our **State Vice-President**, **State Representative** and **Middle Level Representative**. Below are the bios for the principals who are running for these open positions.

---



#### **WAEMSP Vice President**

**Jared Hardman**

**Monroe Elementary - Green River, WY**

I grew up in Coeur d' Alene and Salmon Idaho and received my bachelor's degree from Brigham Young University-Idaho and my Master's Degree in Educational Administration from South Dakota State University.

After student teaching in Las Vegas I then began my teacher career in Sundance Wyoming. I was a K-12 Spanish teacher in Sundance Wyoming for 5 years. I then took my first administrative position at Desert School in Wamsutter, WY which is a K-8 building. We had the privilege of becoming one of the Wyoming schools who received the honor of becoming a model school PLC. I then took the Elementary School position at Monroe Elementary in Green River.

This is my second year as principal at Monroe and we enjoy the community of Green River and are happy to be raising our 3 small children in this community. I love to help students foster a love for learning so they can be successful in whatever they pursue. I have been a member of WAEMSP for the past 6 years. I have enjoyed the continual support and collaboration offered from being a member of WAEMSP. I would very much appreciate your vote this spring.

---



#### **WAEMSP State Representative**

**Liann Brenneman**

**Buffalo Ridge & Hebard Elementary - Cheyenne, WY**

I have been a lifelong resident of Wyoming. Following the completion of my Bachelor of Arts in Elementary Education from the University of Wyoming I started teaching in Riverton in 1990. While teaching in Riverton I completed my Master of Arts in Special Education and Gifted Education at the University of Connecticut. I then moved from the classroom to the district position of gifted and talented educational coordinator. While in this position I completed the Principal preparation program at the University of Wyoming. In 2000 I took a position as the district coordinator for the 21<sup>st</sup> CCLC grant. A couple years after the passing of my father I moved to Laramie and started my tenure in elementary administration. I have been an elementary principal since 2004. While in Laramie I completed my Educational Doctorate in Educational Leadership (2010). Recently, in 2019, I moved from Laramie to Cheyenne where I have the honor of serving as principal at both Buffalo Ridge and Hebard Elementary schools. I have been a member of WAEMSP for 17 years. During these 17 years I have served as Regional Co-President, vice President, and now as state legislative representative on the executive board. In addition to my administration career, I serve in the Wyoming Army National Guard. Currently I am the Battalion Commander for the Regional Training Institute. This position is very similar to administration and my experience in the Joint Operations Center allowed me to work with state organizations. I believe my experiences have prepared me well for the opportunity to serve as the State Representative on the WAEMSP Executive Board.



## **WAEMSP State Representative**

**Heather Moro**

**Slade Elementary - Laramie, WY**

Thank you for the opportunity to run for State Representative of the WAEMSP board. Currently, it is my honor to serve on the board as President. The past five years serving in multiple positions have been immensely rewarding, and I cherish the chance to continue serving the great members of WAESMP in fulfilling its valuable mission.

I am enjoying my thirteenth year as principal of Slade Elementary School in Laramie. Prior to my work at Slade, I served three years as the principal of Rock River School, following two years as a special education teacher there. Prior to moving to Wyoming in 2003, I taught middle school for four years in Seattle, Washington. I earned my bachelor's (Elementary Education/Behavior Management) and master's degrees (Educational Leadership) from the University of Oregon. In 2004, I attended the University of Wyoming to earn my School Principalship endorsement.

Wyoming has been my home for over eighteen years now. The state and its people fuel my passion to educate and grow our youth in the most productive and caring ways possible. I look forward to working with you all in the adventurous pursuit of enhancing Wyoming's educational systems.

---



## **WAEMSP Middle Level Representative**

**Stacie Anfinson**

**Rock River Elementary & Jr. High - Rock River, WY**

I have been in education for 22 years, and an administrator for the past 8 years. My career started in Sweetwater County at Superior Elementary. After 2 years in Sweetwater 1, I moved to Laramie where I taught elementary school for 14 years. To start my administration experience, I became an assistant principal at an elementary school in Albany County School District 1. After 3 years at the elementary level, I moved into the secondary world at Laramie High School followed by Laramie Middle School. Currently, I am the principal at Rock River School, a K-12 rural school northwest of Laramie.

I am interested in the middle level representative position for several reasons. As a member of the board I have learned from my colleagues and would like to contribute to our team from a K-12 lens. It is also a great opportunity for professional development and gaining perspectives from multiple school perspectives. We all have unique characteristics at each district and collaborating across the state can be beneficial for all of us. Thank you for the opportunity to be considered a middle level representative on the WAEMSP board. Regardless if I'm elected, I look forward to collaborating with everyone as we continue to navigate our careers in such unique times.

***The mission of WAEMSP is to promote and support the improvement of education for all Wyoming children through effective educational leadership***



## ***Executive Director Report***

***Kenny Jones***

***WAEMSP Executive Director***

***Sheridan, Wyoming***

**Membership:** We currently have 179 members who have renewed or joined WAEMSP and NAESP for the 2020 - 21 school year. **If there are new principals in your district or principals who are not members I would ask each of you to encourage them to join our association. You can direct them to me to get the enrollment form.** We do have prorated rates for new principals, assistant principals or new aspiring principals who join late in the year. The prorated rates are as follows: New Active Principal - March \$266.64, April \$233.31, May \$199.98. New Active Assistant Principal New - March \$246.64, April \$215.81, May \$184.98. Aspiring Principal - March \$63.36, April \$55.44, May \$47.52. Folks are unable to obtain the prorated rates via our online process so they will need to contact me to get these rates.

**Spring 2021 Election:** As you have read previously in this newsletter we received one candidate as a nominee for our open vice-president position, two candidates for our state representative position and one candidate for our middle level position. On Monday, March 15 you I will be sending out a Survey Monkey link to everyone so you can place your votes. **The election window is only open from the 15<sup>th</sup> through the 19<sup>th</sup>.** I hope you are able to take the time to read through the bios of these members and place your vote.

**Spring Membership Enrollment:** As in years past, we have run a spring enrollment period for those of you who would like to go ahead and renew your membership for next year now. The new enrollment form is on the next page for you.

**Together Apart: Leading and Learning 2021:** I hope you have been able to take advantage, either live or via the recordings, of the webinar sessions ASCD has been providing to you. Kwame Simmons has done a very good job with the virtual presentations. I feel his sessions have been informative and applicable to the daily work of a building level leader. If you have any questions or have misplaced the links to the sessions to date, please email me and I will send them to you, along with the handouts he has provided.

**State Advocacy:** I want to encourage all of you to stay abreast of the legislative happenings taking place in Cheyenne this month. I know time is valuable but I do believe if your local legislators don't hear from you directly regarding the issues surrounding education they may make some changes (mostly budgetary) that could negatively effect all of you, your students and staff. Liann and I will do our best to keep you informed.

---

**NAESP Log in Information:** Go to [www.naesp.org](http://www.naesp.org) and log in

Your user name is the email address you provided Kenny with your membership information

Your password is your last name, all lower case

I encourage you to reset your password to something more secure. If you have any questions or problems with logging in, please contact [membership@naesp.org](mailto:membership@naesp.org) as they can reset your password quickly and easily.



## WAEMSP/NAESP

## 2021 – 2022 MEMBERSHIP ENROLLMENT FORM

PLEASE TYPE OR PRINT: ☐ NEW MEMBER ☐ RENEWAL

Name: \_\_\_\_\_

Position: \_\_\_\_\_ Date of Birth: \_\_\_\_\_

School: \_\_\_\_\_ Grade Configuration: \_\_\_\_\_

School Address: \_\_\_\_\_

City: \_\_\_\_\_ State: \_\_\_\_\_ Zip: \_\_\_\_\_

School Phone: \_\_\_\_\_ School Fax: \_\_\_\_\_

Your School E-Mail Address: \_\_\_\_\_

Home Address: \_\_\_\_\_

City: \_\_\_\_\_ State: \_\_\_\_\_ Zip: \_\_\_\_\_

Cell Phone: \_\_\_\_\_

Preferred Address: ☐ Home ☐ School Referred by (if new member): \_\_\_\_\_**MEMBERSHIP CATEGORIES:**

**ACTIVE:** Practicing elementary and middle-level principals and related titles receive all NAESP benefits and services including Legal Benefits Program (\$2 million individual professional liability coverage / up to \$10,000 for job protection defense, based on continuous years of membership), access to webinars, research, online learning, discounts on ASCA membership, conference registration and resources.

**ASSISTANT PRINCIPAL:** Active assistant principals and related titles receive all NAESP benefits and services including Legal Benefits (\$2 million individual professional liability coverage / up to \$10,000 for job protection defense, based on continuous years of membership), access to webinars, research, online learning, discounts on ASCA membership, conference registration and resources.

**INSTITUTIONAL ACTIVE:** Includes an Active membership plus a duplicate set of publications for your school library.

**ASSOCIATE:** Available to professors of education or non-administrators. Includes all benefits and services EXCEPT the Legal Benefits Program.

**ASPIRING PRINCIPAL:** Available to all students, teachers, graduate students, counselors, and other pursuing a career, but not yet practicing, as an elementary or middle-level administrator. Includes all NAESP benefits and services EXCEPT the Legal Benefits Program.

**EMERITUS:** For retired NAESP Active members. Includes all benefits and services, including the Legal Benefits Program.

**TYPES OF MEMBERSHIP**

<input type="checkbox"/>	ACTIVE	\$450
<input type="checkbox"/>	ASSISTANT PRINCIPAL	\$370
<input type="checkbox"/>	INSTITUTIONAL ACTIVE	\$475
<input type="checkbox"/>	ASSOCIATE	\$165
<input type="checkbox"/>	ASPIRING PRINCIPAL	\$95
<input type="checkbox"/>	EMERITUS	\$85

**METHOD OF PAYMENT****Make Checks Payable to WAEMSP**

- ☐ Check Enclosed  
☐ Purchase Order Attached

Pay online with your credit card,  
[www.waemsp.org](http://www.waemsp.org).

Send Membership Form to: Kenny Jones, 2073 Pheasant Draw Road, Sheridan, WY 82801

PHONE: 307-202-0977. E-MAIL: [waemsp.exec@gmail.com](mailto:waemsp.exec@gmail.com)[www.waemsp.org](http://www.waemsp.org) | @waemsp

## NAESP ELECTION RESULTS 2021

The **NAESP Election** Audit Board met this week to certify the ballot count as received from the electronic voting provider for the 2021 NAESP election for vice president. Also provided are the results from the NAESP Zone elections and the new director at large, minority.

### For the position of **Vice President:**



**Liza Caraballo-Suarez, Ed.D.**

Principal

Magnet School of Architecture,  
Engineering & Design — P.S. 120  
Brooklyn, New York



### For the position of **Director for Zone 5:**

**Amy Dixon**

Principal

Lincoln & Jefferson Attendance Centers  
Carmi, Illinois



### For the position of **Director for Zone 7:**

**Matthew Lewis**

Principal

Garfield Elementary School  
Lewistown, Montana



### For the position of **Director for Zone 9:**

**Scott Borba**

Principal

Le Grand Union Elementary School  
Le Grand, California

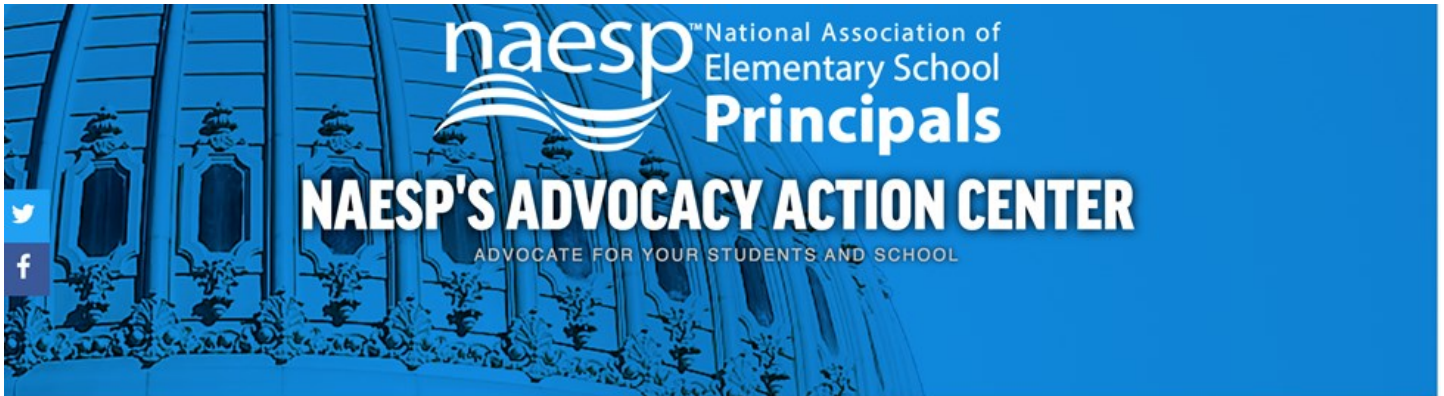


### For the position of **Director At Large, Minority:**

**Ramona Dunn**

Principal

New Mark Middle School  
Kansas City, Missouri



On behalf of elementary and middle school principals from across the country, the National Association of Elementary School Principals (NAESP) applauds the passage of the American Rescue Plan, which includes more than \$125 billion in direct support for K-12 schools. The federal government has stepped up in a big way: This package is an extraordinary commitment to support America's K-12 schools at their most perilous moment.

These resources will help principals respond to the many pressing issues they are facing, including:

- ◆ Reopening and keeping open schools;
- ◆ Reconfiguring school spaces to meet social distancing guidelines;
- ◆ Responding to increased staffing needs;
- ◆ Boosting high-quality professional development for staff;
- ◆ Ensuring reliable home internet access for students;
- ◆ Addressing student learning loss; and
- ◆ Bolstering mental health and trauma sensitivity supports for students.

The coronavirus pandemic has shone a bright light on the homework gap experienced by the 16 million students in this country who do not have internet access at home, so NAESP appreciates the \$7 billion in E-Rate funding also included in this bill.

Since last spring when the pandemic caused the closures of more than 124,000 K-12 schools, NAESP has urged a federal response that matches the gravity of the moment and positions schools to confront this crisis head on. The \$125 billion included in the American Rescue Plan, on top of \$67 billion previously provided in direct K-12 aid, amounts to a more than \$190 billion federal response to K-12 schools.

NAESP encourages the U.S. Department of Education to get these funds to states expeditiously to ensure resources go where they are needed the most during this time of extraordinary turmoil: in schools. NAESP looks forward to continue to work with members of both parties to provide ongoing K-12 federal support in the coming months as the needs on the ground continue to evolve.





Web seminars provide real-time opportunities to interrelate with content experts, educational leaders, and practicing principals around current issues. NAESP provides this setting to bring together principals from locations around the country to participate in these online learning programs. No special equipment other than Internet access is needed to participate in any of our webinars. Most webinars are free.

*Archived webinars are available only to members using your NAESP log in.*

## **LEADING FOR LITERACY: PROMOTING CODE-BASED LITERACY SKILLS IN EARLY ELEMENTARY SCHOOL**

**Date: March 25, 2021**

**Time: 2:00 – 3:00 p.m. ET**

Join Jess Surles, M.Ed., and Lauren Artzi, Ph.D. for the fifth installment of the NAESP-Lead for Literacy Center series. This session will focus on instructional evidence-based practices aimed at promoting children's decoding and word reading. For successful reading, a child needs to have skills that allow them to decode the words (code-based skills) and skills that allow them to understand and comprehend the text and understand what the words mean (meaning-level skills). Therefore, high-quality explicit and systematic reading instruction involves the use of evidence-based practices across all tiers of instruction and promotes the learning of both code-based and meaning-level skills. In this session, presenters will discuss key considerations for implementing evidence-based practices to support children's decoding and word reading in both traditional and virtual learning environments.

Participants will:

- Learn about the critical components of code-based instruction and evidence-based practices to promote word reading and decoding.
- Access web-based tools and resources to support implementation of evidence-based literacy practices by school staff and students.

Presenter: [Jess Surles, M.Ed.](#), is a Technical Assistance Coach for the Lead for Literacy Center at the Center on Teaching and Learning (CTL), University of Oregon.

Facilitator: [Dr. Lauren Artzi](#), is a Technical Assistance Coach for the Lead for Literacy Center and Senior Researcher at the American Institutes for Research.

[REGISTER NOW!](#)

## ***Horace Mann extends complimentary access to its Student Loan Solutions platform for educators***

SPRINGFIELD, Ill.--(BUSINESS WIRE)-- Horace Mann Educators Corporation (NYSE:HMN) announced today that its Student Loan Solutions (SLS) program identified more than \$100 million in Public Service Loan Forgiveness (PSLF) opportunities for educators in 2020, bringing the program's lifetime total to more than \$350 million.<sup>1</sup>

The Horace Mann SLS program provides webinar education, online resources and expert loan coaches to help all public school educators get the loan forgiveness they deserve under PSLF and Teacher Loan Forgiveness. PSLF forgives the remaining balance on Direct Loans after 120 monthly payments under a qualifying repayment plan. Since launching its Teacher Appreciation initiative in the fall, Horace Mann has offered all public school educators and school districts nationwide complimentary access to the SLS program — and is now extending that access through the 2021-2022 school year.

- Of the educators taking advantage of the SLS program, over **85% find they can be better off**, either qualifying for loan forgiveness or obtaining lower monthly payments, and for a majority of people, both
  - On average educators using the program save \$330 per month, **equivalent to more than \$4,000 per year in student loan payment savings**
  - Of those that could qualify for PSLF the **estimated student loan forgiveness is \$75,000+ on average**
- “Horace Mann is on a mission to reduce the burden of student loan debt for educators. Since announcing our Teacher Appreciation initiative, school districts in more than 21 states have adopted our SLS program as a benefit for their employees, creating a meaningful opportunity for over 86,000 public school employees to have all or some of their student loan debt forgiven,” said Erin Clark, Vice President of Horace Mann's Student Loan Solutions program. “Some of the largest school districts in the country recognize the value of the Horace Mann Student Loan Solutions program. They know it helps to keep their current employees in the education profession, and also attracts new talent.”

A June 2020 Horace Mann survey showed more than 60% of educators have student loan debt, and that debt weighs heavily on their decision to stay in the profession. For a career that generally requires a college degree or greater, educator job compensation is often not commensurate with the investment it took to get there. Notably, 85% of educators said student loan debt has prevented them from achieving life goals, such as saving, buying a house or starting a family. Others have taken on additional jobs to support their families. Addressing student loan debt can help.<sup>2</sup>

“It is important to pursue PSLF now, even during the CARES Act student loan forbearance,” added Clark. “Educators who are in the right repayment plan now receive credit toward their qualifying loan payments, even if their payment is \$0. But most educators are in the wrong payment plan today, and are missing this valuable opportunity to move closer to forgiveness.”

The SLS program is complimentary to both the school district and employees in appreciation of everything our schools and teachers are doing during the pandemic. School districts interested in learning more about the SLS program for employees and new hires can request information at [horacemann.com/student-loan-debt-help/schools](https://horacemann.com/student-loan-debt-help/schools). Educators can sign up directly at [horacemann.com/student-loan-debt-help/signup/teacher-appreciation](https://horacemann.com/student-loan-debt-help/signup/teacher-appreciation).

(1) Potential savings of educators assisted by Horace Mann with Public Service Loan Forgiveness from October 2016 through 2020 based on assumptions established by the U.S. Office of Federal Student Aid. Monthly and annual savings are based on 2020 only.

## (2) The Student Loan Debt Effect: Good Teachers are Leaving Education, Insights from the Horace Mann Educators Student Loan Debt Study

### About Horace Mann

Horace Mann Educators Corporation (NYSE: HMN) is the largest financial services company focused on providing America's educators and school employees with insurance and retirement solutions. Founded by Educators for Educators® in 1945, the company is headquartered in Springfield, Illinois. For more information, visit [horacemann.com](http://horacemann.com), or follow us @HoraceMann on Twitter and LinkedIn, and @HoraceMannInsurance on Facebook.

View source version on [businesswire.com](https://www.businesswire.com/news/home/20210301006068/en/): <https://www.businesswire.com/news/home/20210301006068/en/>

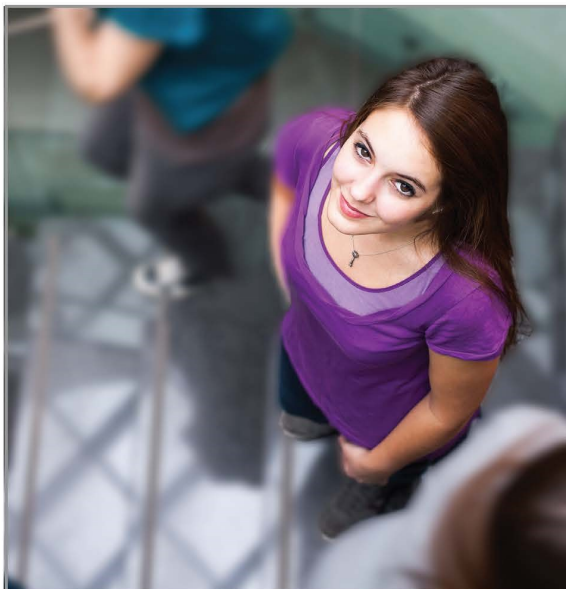
#### Media contact:

Michelle Eccles  
Public Relations Manager  
217-788-5394  
[michelle.eccles@horacemann.com](mailto:michelle.eccles@horacemann.com)

#### Investor contact:

Heather J. Wietzel  
Vice President, Investor Relations  
217-788-5144  
[investorrelations@horacemann.com](mailto:investorrelations@horacemann.com)

Source: Horace Mann Educators Corporation



#### Attract talented teachers with no-cost school benefits

Attract and retain top teaching talent by offering more. In addition to your benefits package, provide quality financial education workshops, explain proven ways to secure classroom funding and offer extras like a teacher recognition program – all provided by Horace Mann.

*For information about Horace Mann and how we can help your schools and your employees, visit [schools.horacemann.com](http://schools.horacemann.com) or contact us at 866-999-1945.*

Auto | Home | Life | Annuity





## HARVARD GRADUATE SCHOOL OF EDUCATION

### Free resources at Harvard Graduate School of Education

Education Now webinar series: <https://www.gse.harvard.edu/education-now> HGSE's Education Now webinars will look at the challenges of the moment, offering actionable insights that you can use today. We aim to give our audience strategies and ideas that will prompt hope, add fuel to the push for equity, and create the circumstances for transformation across education.

Usable Knowledge: <https://www.gse.harvard.edu/uk>

Usable Knowledge is a digital publication at HGSE. It was founded to connect research to practice and make education research and well-vetted strategies accessible to a wide audience: teachers and principals, district leaders, policymakers, university faculty and higher ed professionals, nonprofit leaders, entrepreneurs, members of the media, and parents.

The Principal's Network: <https://www.gse.harvard.edu/ppe/principals-network>

The Principals' Network provides school leaders with a robust, online professional learning network through which they can share and access resources, offer and receive feedback, and maintain an ongoing and mutually beneficial relationship with HGSE. This network is thoughtfully designed to support principals as they lead their schools all over the world.

### Programs offered by Professional Education

#### [Certificate in School Management Leadership \(CSML\)](#)

The Certificate in School Management and Leadership (CSML), a multi-course certificate program for preK-12 school leaders, is an innovative collaboration between the Harvard Graduate School of Education (HGSE) and Harvard Business School (HBS). Bridging the fields of business and education, CSML integrates expertise in managing teams and organizations with best practices in educational leadership, to provide school leaders with frameworks, skills, and knowledge to effectively lead and drive change improvement in schools.

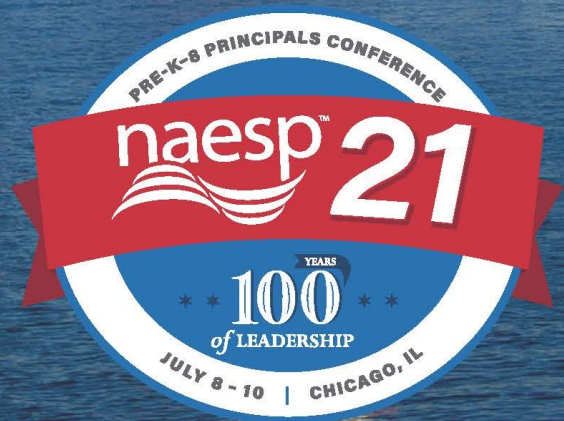
All online programs: <https://www.gse.harvard.edu/ppe/online>



# Leading for 100 Years

The NAESP Annual Conference is the one national event that provides the strongest unified voice for pre-K-8 educators across the U.S. and around the world.

Join us in **Chicago, July 8-10, 2021**, to help celebrate **NAESP's 100th anniversary** of offering professional learning experiences designed to inspire bold thinking and innovative leadership.



National Association of Elementary School Principals  
*Serving all elementary and middle-level principals*

## Our Principal Mission is YOU..... Join Us Today!

Please type or print ☐ New member ☐ Renewing member

Name \_\_\_\_\_ Date of Birth \_\_\_\_\_

Position \_\_\_\_\_ School \_\_\_\_\_ Grade Config. \_\_\_\_\_

School Address \_\_\_\_\_

City \_\_\_\_\_ State \_\_\_\_\_ Zip \_\_\_\_\_

School Phone \_\_\_\_\_ School Fax \_\_\_\_\_

Home Address \_\_\_\_\_

Home Phone \_\_\_\_\_ Email Address \_\_\_\_\_

Preferred Address: ☐ Home ☐ School Referred by: \_\_\_\_\_

### Type of Membership:

<input type="checkbox"/> WAEMSP/NAESP Active	\$450
<input type="checkbox"/> WAEMSP/NAESP Assistant Principal	\$370
<input type="checkbox"/> WAEMSP/NAESP Institutional/Active	\$475
<input type="checkbox"/> WAEMSP/NAESP Emeritus	\$85
<input type="checkbox"/> WAEMSP/NAESP Aspiring	\$95
<input type="checkbox"/> WAEMSP/NAESP Associate	165

### Method of Payment, check one:

*Make checks payable to WAEMSP.*

☐ Check enclosed ☐ PO

**Pay online with your credit card, [www.waemsp.org](http://www.waemsp.org).**

Mail form along with payment to: **Kenny Jones, 2073 Pheasant Draw Road, Sheridan, WY 82801, [waemsp.exec@gmail.com](mailto:waemsp.exec@gmail.com)**

## Your 2020 - 2021 WAEMSP Board of Directors

### PRESIDENT

Heather Moro, Slade Elementary, Laramie 721-4410

### PRESIDENT-ELECT:

Dave Hardesty, Linford Elementary, Laramie 721-4439

### VICE-PRESIDENT:

Clay Cates, Pronghorn Elementary, Gillette 682-1676

### STATE REPRESENTATIVE:

Janel Scurlock, Pinedale Elementary, Pinedale 367-2828

### MIDDLE LEVEL REPRESENTATIVE:

Lu Kasper, Lusk Elem & MS, Lusk 334-2224

### SECRETARY:

Anne Marie Covey, Washington Elem, Green River 872-2000

### TREASURER:

Mike Wood, Livingston Elementary, Cody 587-4271

### STATE LEGISLATION:

Liann Brenneman, Buffalo Ridge Elem, Cheyenne 771-2595

### FEDERAL RELATIONS:

Chris Cundall, Rock Springs Jr. High, Rock Springs 352-3474

### NORTHWEST REGION PRESIDENTS:

Ryan Clark, Worland Middle School, Worland 347-3233

Barry Scott, Fort Washakie Elementary, Fort Washakie 332-2380

### NORTHEAST REGION PRESIDENTS:

Brian Hartwig, Sundance Elementary, Sundance 283-1227

Nate Cassidy, Buffalo Ridge Elementary, Gillette 688-3058

### CENTRAL REGION PRESIDENTS:

Tanya Seeds, Douglas Primary, Douglas 358-3502

Wes Gamble, Douglas Intermediate, Douglas 358-5250

### SOUTHWEST/WEST REGION PRESIDENT:

Amy Bell, Big Piney/LaBarge Elem., Big Piney 276-3313

Christopher Jensen, Urie Elementary, Lyman 786-4100

### SOUTHEAST REGION PRESIDENT:

Vicki Begin, Rossman Elementary, Cheyenne 771-2544

Nyana Sims, Lincoln Elementary, Torrington 532-4003

### EXECUTIVE DIRECTOR/EDITOR:

Kenny Jones, Sheridan 202-0977



Enjoy the GOOD life. Make the most of your benefits.

Association Member Benefits Advisors (AMBA) is proud to partner with the Wyoming Association of Elementary and Middle School Principals. AMBA is a nationwide full-service agency focused on plan design, negotiations, and implementation of benefit programs for associations.

We currently make benefits available to over 40 associations across the United States. We assist in making benefits available such as first diagnosis cancer insurance, long-term care insurance, and many merchant discounts that are not available to the general public.

Make sure you're making the most of your WAEMSP membership.  
See what benefits are available to you!

To learn more about available benefits, call 800-258-7041

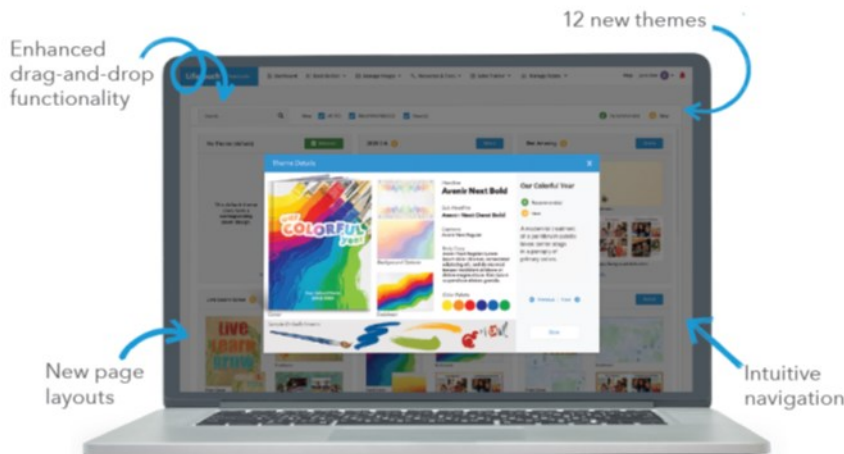


in partnership with



# From **simple** to **sophisticated**.

Introducing our new Lifetouch Yearbook Creation Tool.



We make it **fun** and **easy** to tell your school's story:

- Picture Day images automatically upload for you to flow onto pages.
- Build pages effortlessly: choose a layout, add images and captions and you're done.
- Inspirational resources and tools for every stage and every page.

[schools.lifetouch.com/yearbooks](https://schools.lifetouch.com/yearbooks)

**Lifetouch.**

## PLAY IS OUR LIFE!

- Playground Equipment
- Safety Surfacing
- Shade Structures
- Splash Pad/Spray Parks
- Outdoor Musical Equipment
- Outdoor Fitness Equipment
- Site Furnishings
- Picnic Shelters
- Scoreboards
- Aluminum Bleachers
- Sports Equipment
- Flag Poles

Toll Free: 1-844-599-0757  
[dakotaplayground.com](https://dakotaplayground.com)  
E-mail: [sales@dakotaplayground.com](mailto:sales@dakotaplayground.com)

Fun, Fitness and Far More!  
**Dakota Playground.**

## A Comprehensive Social and Emotional Learning Program



In today's complex world, a well-defined SEL program is more important than ever. Edgenuity® is proud to partner with Purpose Prep to offer a content-rich SEL curriculum to address a broad range of prevention and intervention priorities for students in grades 6–12.

edgenuity.com  
877.7CLICKS

 **Edgenuity** +  **PURPOSEPREP**



# taco john's™

— SINCE 1969 —